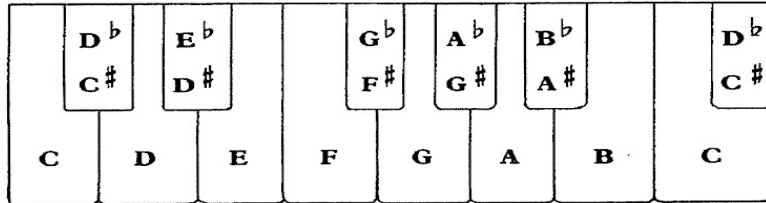


Name: _____

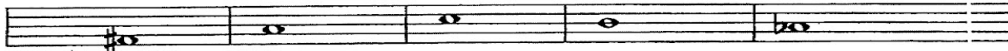
Whole and Half Steps

In music, a *step* is the distance from one note on the staff to the next note above or below. Whole and half steps are shown easily on a piano keyboard. A half step is the distance between any key and the key nearest to it (either two white keys that have no black key between them or a white key and the nearest black key). A whole step equals two half steps.



- A. Fill in the blanks with either "whole" or "half."
1. From C to D is a ____ step.
 2. From E to F is a ____ step.
 3. From B to C is a ____ step.
 4. From G to A is a ____ step.
 5. From A to B is a ____ step.
 6. From C to C♯ is a ____ step.
 7. From F to F♯ is a ____ step.
 8. From B to B♭ is a ____ step.
 9. From E to F♯ is a ____ step.
 10. From B to C♯ is a ____ step.

- B. a. Write the name of the note down.
 b. Draw and name the note that is one half step above the note given.



1. ____ 2. ____ 3. ____ 4. ____ 5. ____

- C. a. Write the name of the note down.
 b. Draw and name the note that is one whole step above the note given.



1. ____ 2. ____ 3. ____ 4. ____ 5. ____

- D. a. Write the name of the note down.
 b. Draw and name the note that is one whole step above the note given.



1. ____ 2. ____ 3. ____ 4. ____ 5. ____