

## How to Make a Cladogram

(Adapted from ENSI/SENSI lesson plan: Making Cladograms  
<http://www.indiana.edu/~ensiweb/home.html>)

Cladograms are diagrams which depict the relationships between different groups of taxa called “clades”. By depicting these relationships, cladograms reconstruct the evolutionary history (phylogeny) of the taxa. Cladograms can also be called “phylogenies” or “trees”.

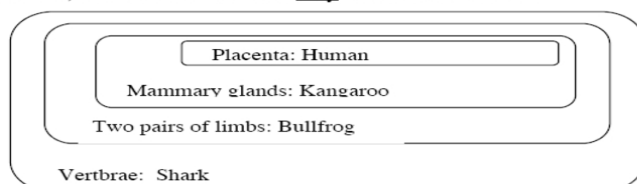
Cladograms are constructed by grouping organisms together based on their shared derived characteristics.

### Example:

- Given these characters and taxa:

	Taxa			
Characters	Shark	Bullfrog	Kangaroo	Human
Vertebrae	X	X	X	X
Two pairs of limbs		X	X	X
Mammary glands			X	X
Placenta				X

- Draw a Venn diagram. Start with the character that is shared by all the taxa on the outside. Inside each box, write the taxa that have only that set of characters.



- Convert the Venn diagram into a cladogram like so:

