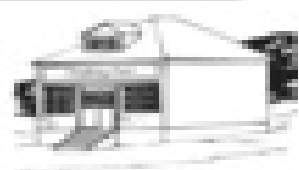


Name _____

Date _____

CHANGE ON THE TUNDRA

Directions: Read the article below. Then, in the space provided, answer each of the questions that follow. Write the letter(s) of the line(s) that helped you answer the question. Use the back of this page if you need more space to write.



A.	Until the 1700s, the Inuit lived off the land with little outside contact. Then European explorers
B.	came to the Arctic, looking for a northwest passage. They wanted to find a shorter way to the Pacific
C.	Ocean. Fishermen from Portugal, Spain, and France came for the cod and herring. Traders were
D.	next, hoping to find furs, musk, and beaver furs.
E.	Slowly, the Inuit began to trade with the newcomers. Most meetings and trades were friendly, but
F.	some were not. Some Inuit were kidnapped and taken back to Europe.
G.	In the 1700s, the English, French, and Russians began building trading posts. The Inuit traded
H.	walrus, whale oil, and furs for wooden boats, iron knives, knives, and women's cloth. They used
I.	European metal tools in place of the bone and stone tools they had to make. Fishing hooks, nets, and
J.	guns made hunting and fishing much easier for the Inuit. To get the European goods, Inuit hunters
K.	had to spend more time hunting and trapping. They started trapping animals just for their furs.
L.	Over time, the Inuit way of life changed. Whalers came in the 1800s. Some Inuit worked for the
M.	whalers. Animals were harder to find. The Inuit came to need the European goods. They began to
N.	give up the old ways and move closer to the trading posts.
O.	Besides tools and goods, the Europeans brought disease. The Inuit could not fight smallpox,
P.	measles, or the flu. Many Inuit got sick. Thousands died.
Q.	The process was slow, but Inuit life changed.

- From which countries did people come to the Arctic? _____
Line(s) _____
- Why did people from other countries come to the Arctic? _____
Line(s) _____
- For what did the Inuit trade? _____
Line(s) _____
- How did contact with Europeans make Inuit life better? _____
Line(s) _____
- How did contact with Europeans hurt Inuit life? _____
Line(s) _____
- Why did the Inuit move closer to the trading posts? _____
Line(s) _____

