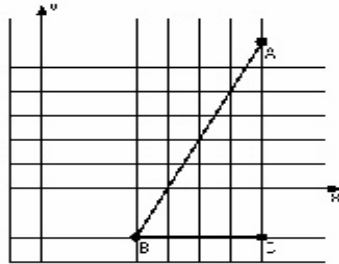


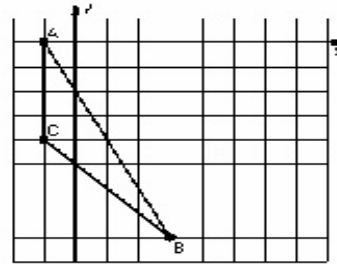
### Dilations (C)

Instructions: Draw and label the dilated image for each triangle.  
Label the center of dilation.

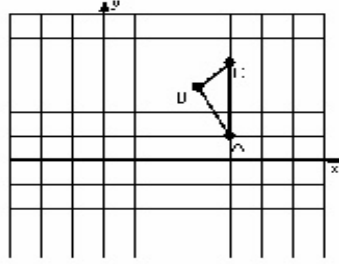
1) Dilation scale =  $1/2$ , center  $D(-1, 0)$



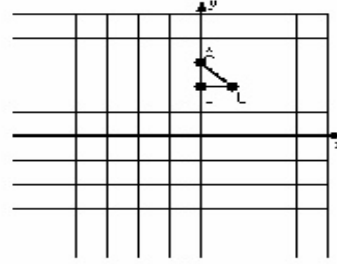
2) Dilation scale =  $1/2$ , center  $D(3, -1)$



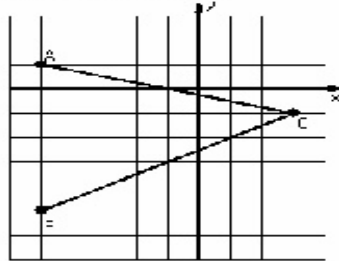
3) Dilation scale = 2, center  $D(5, 4)$



4) Dilation scale = 4, center  $D(1, 3)$



5) Dilation scale =  $1/2$ , center  $D(-5, 5)$



6) Dilation scale =  $1/3$ , center  $D(-1, -3)$

