

Chapter 4; Skin & Body Membranes Review Packet: Answers

1.

Membrane	Tissue Type (epithel/connective)	Common Locations	Functions
Mucous	Epithelial underlaid w/connective -Lamina propia (CT)	Respiratory, digestive, urinary, reproductive	Protection, lubrication, secretion, absorption
Serous	Simple squamous epithelial tissue Fine connective	-internal ventral cavities -covers organs	Produce lubricating fluid to reduce friction
Cutaneous (skin)	Epidermis = ET Dermis = CT	Body exterior	Protects deeper body tissues
Synovial	All connective tissue	Lines joint cavities	Produce lubrication Decrease friction

2.

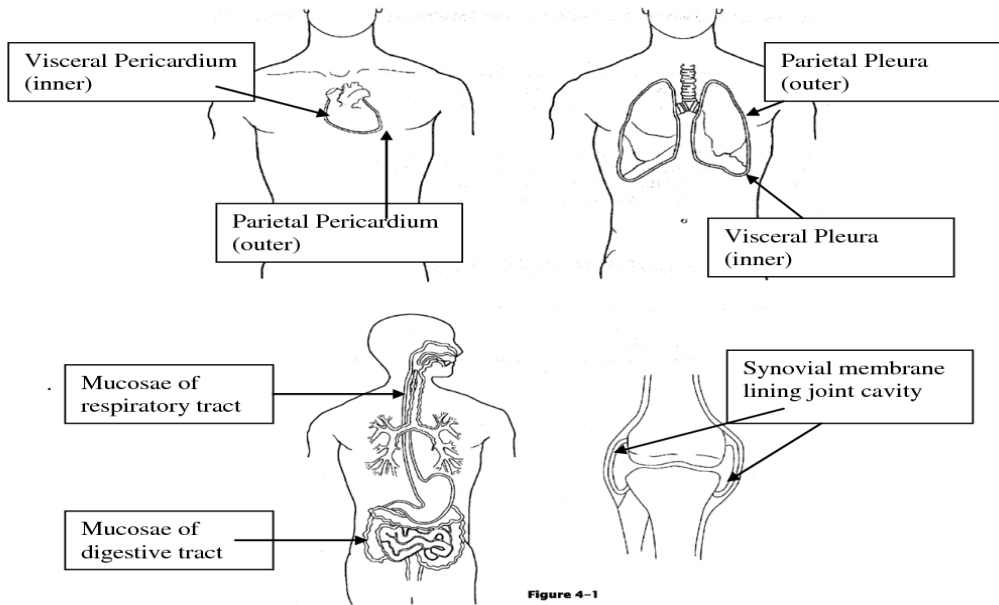


Figure 4-1