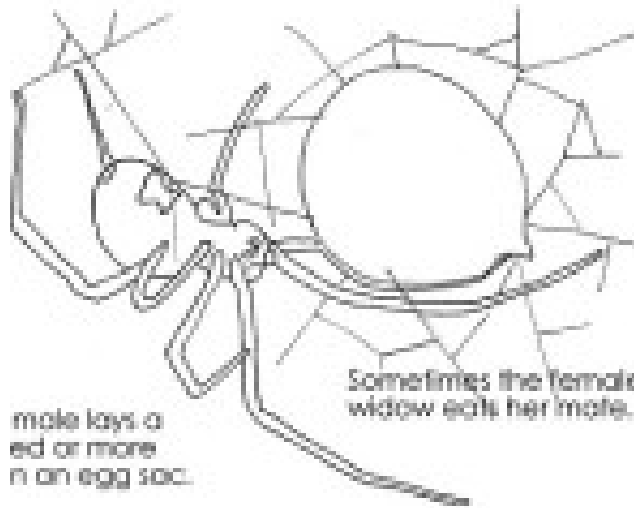
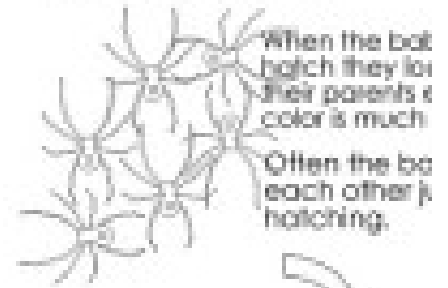


Life Cycle of a Spider Black Widow



Sometimes the female black widow eats her mate.

male lays a
egg or more
in an egg sac.

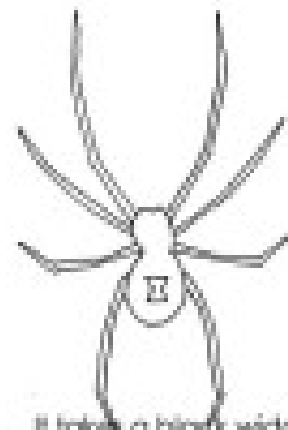


When the baby
hatch they look
like their parents &
color is much
darker.

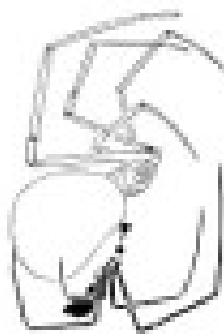
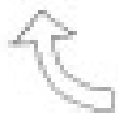
Often the baby
spiders eat each other
just after hatching.



Baby spider
leave the
crawling
ballooning
stage.



It takes a black widow
between 3 and 10
months to mature into
an adult.



The male and female
mate in spring.

