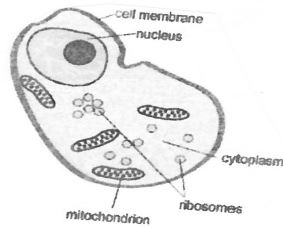


7<sup>th</sup> grade Cell Biology Study Guide

Name \_\_\_\_\_ Period \_\_\_\_\_

1. What is the rigid structure that is found in plants and trees called \_\_\_\_\_.

2. Please view the picture:



What type of cell is this? Please circle: a prokaryotic cell or eukaryotic cell and is this a picture of a plant or animal cell and explain why? \_\_\_\_\_.

3. No matter how large or how small a living organism is:

True or False a. All living things have cells \_\_\_\_\_

b. Their cells function similarly \_\_\_\_\_

4. What organelle stores the genetic information of the cell? \_\_\_\_\_.

And what is this genetic material called that crime investigators use to study \_\_\_\_\_.

5. What is the green pigment inside the chloroplasts called \_\_\_\_\_. This green surface allows these organelles (chloroplasts) to absorb energy from which source?  
\_\_\_\_\_.

6. How do chloroplasts help the mitochondria function? \_\_\_\_\_  
\_\_\_\_\_.

7. When an animal cell uses the chemical energy stored in sugar molecules, which organelle or organelles must the oxygen reach? \_\_\_\_\_.

8. Sunlight is the fuel for \_\_\_\_\_.

9. Different cells have different number of mitochondria. In fact, some of your cells in your body have a hundred mitochondria. A cell that uses a large amount of \_\_\_\_\_ would need more mitochondria.

10. Is this a plant or an animal and why?

