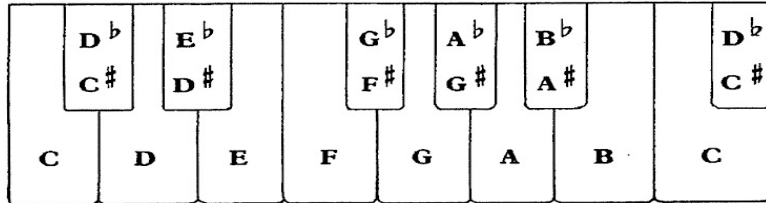


Name: \_\_\_\_\_

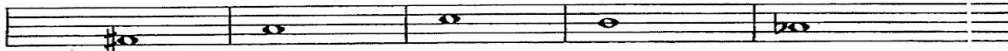
### Whole and Half Steps

In music, a *step* is the distance from one note on the staff to the next note above or below. Whole and half steps are shown easily on a piano keyboard. A half step is the distance between any key and the key nearest to it (either two white keys that have no black key between them or a white key and the nearest black key). A whole step equals two half steps.



- A. Fill in the blanks with either "whole" or "half."
1. From C to D is a \_\_\_\_ step.
  2. From E to F is a \_\_\_\_ step.
  3. From B to C is a \_\_\_\_ step.
  4. From G to A is a \_\_\_\_ step.
  5. From A to B is a \_\_\_\_ step.
  6. From C to C# is a \_\_\_\_ step.
  7. From F to F# is a \_\_\_\_ step.
  8. From B to Bb is a \_\_\_\_ step.
  9. From E to F# is a \_\_\_\_ step.
  10. From B to C# is a \_\_\_\_ step.

- B. a. Write the name of the note down.  
 b. Draw and name the note that is one half step above the note given.



1. \_\_\_\_ 2. \_\_\_\_ 3. \_\_\_\_ 4. \_\_\_\_ 5. \_\_\_\_

- C. a. Write the name of the note down.  
 b. Draw and name the note that is one whole step above the note given.



1. \_\_\_\_ 2. \_\_\_\_ 3. \_\_\_\_ 4. \_\_\_\_ 5. \_\_\_\_

- D. a. Write the name of the note down.  
 b. Draw and name the note that is one whole step above the note given.



1. \_\_\_\_ 2. \_\_\_\_ 3. \_\_\_\_ 4. \_\_\_\_ 5. \_\_\_\_