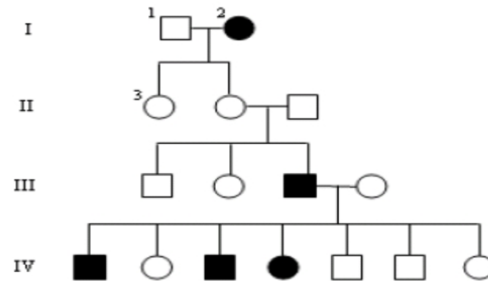


**Pedigree Worksheet**

**KEY KEY KEY KEY KEY KEY**

**Interpreting a Human Pedigree**

Use the pedigree below to answer 1-5



1. In a pedigree, a square represents a male. If it is *darkened* he has *hemophilia*; if *clear*, he had normal blood clotting.
  - a. How many males are there? **8**
  - b. How many males have hemophilia? **3**
2. A circle represents a female. If it is *darkened*, she has *hemophilia*; if *open* she is normal.
  - a. How many female are there? **8**
  - b. How many females have hemophilia? **2**
3. A marriage is indicated by a horizontal line connecting a circle to a square.
  - a. How many marriages are there? **3**
4. A line perpendicular to a marriage line indicates the offspring. If the line ends with either a circle or a square, the couple had only one child. However, if the line is connected to another horizontal line, then several children were produced, each indicated by a short vertical line connected to the horizontal line. The first child born appears to the left and the last child born appears to the right.

|   |    |    |
|---|----|----|
|   | D  | D  |
| d | Dd | DD |
| d | Dd | Dd |

|   |    |    |
|---|----|----|
|   | A  | a  |
| A | AA | aa |
| a | Aa | Aa |

|   |    |    |
|---|----|----|
|   | A  | a  |
| a | Aa | aa |
| a | Aa | aa |

|   |    |    |
|---|----|----|
|   | D  | d  |
| d | Dd | dd |
| d | Dd | dd |

on the outside of the Punnett square stand for? \_\_\_\_\_

13. What do the letters c