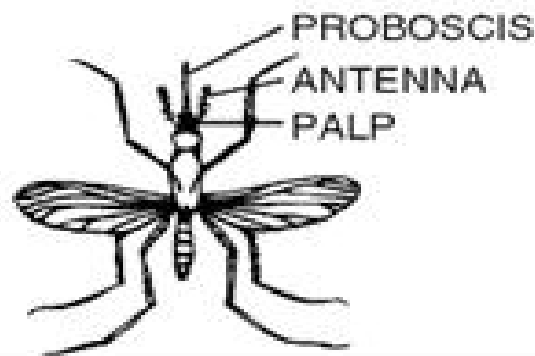


**UNKNOWN FEMALE  
MOSQUITO**



**Key to Mosquito Genera**

<p><b>1a</b> Antennae very bushy -Male mosquito</p>		<p><b>1b</b> Antennae not bushy -Go to 2</p>	
<p><b>2a</b> Palps much shorter than proboscis -Go to 3</p>		<p><b>2b</b> Palps as long as proboscis -Female <i>Anopheles</i></p>	
<p><b>3a</b> Tip of abdomen blunt, without points -Go to 4</p>		<p><b>3b</b> Tip of abdomen with points -Go to 5</p>	
<p><b>4a</b> Antennae much longer than proboscis -Female <i>Deinocerites</i></p>		<p><b>4b</b> Antennae shorter than proboscis -Female <i>Culex</i></p>	
<p><b>5a</b> Many long scales present on hind legs -Female <i>Psorophora</i></p>		<p><b>5b</b> Hind legs without long scales -Female <i>Aedes</i></p>	