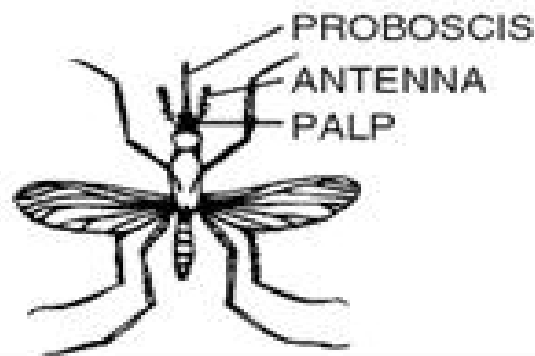


**UNKNOWN FEMALE  
MOSQUITO**



**Key to Mosquito Genera**

|  |  |   |  |
|--|--|---|--|
| <p><b>1a</b><br/>Antennae very bushy<br/>-Male mosquito</p>                                  |  | <p><b>1b</b><br/>Antennae not bushy<br/>-Go to 2</p>                              |  |
| <p><b>2a</b><br/>Palps much shorter<br/>than proboscis<br/>-Go to 3</p>                      |  | <p><b>2b</b><br/>Palps as long<br/>as proboscis<br/>-Female <i>Anopheles</i></p>  |  |
| <p><b>3a</b><br/>Tip of abdomen blunt,<br/>without points<br/>-Go to 4</p>                   |  | <p><b>3b</b><br/>Tip of abdomen with<br/>points<br/>-Go to 5</p>                  |  |
| <p><b>4a</b><br/>Antennae much longer<br/>than proboscis<br/>-Female <i>Deinocerites</i></p> |  | <p><b>4b</b><br/>Antennae shorter<br/>than proboscis<br/>-Female <i>Culex</i></p> |  |
| <p><b>5a</b><br/>Many long scales<br/>present on hind legs<br/>-Female <i>Psorophora</i></p> |  | <p><b>5b</b><br/>Hind legs without<br/>long scales<br/>-Female <i>Aedes</i></p>   |  |