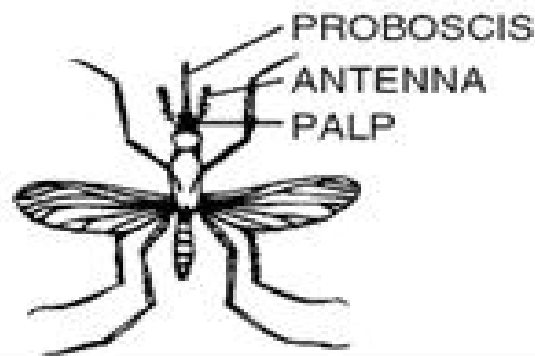


**UNKNOWN FEMALE
MOSQUITO**



Key to Mosquito Genera

| | | | |
|--|--|---|--|
| <p>1a Antennae very bushy -Male mosquito</p> | | <p>1b Antennae not bushy -Go to 2</p> | |
| <p>2a Palps much shorter than proboscis -Go to 3</p> | | <p>2b Palps as long as proboscis -Female <i>Anopheles</i></p> | |
| <p>3a Tip of abdomen blunt, without points -Go to 4</p> | | <p>3b Tip of abdomen with points -Go to 5</p> | |
| <p>4a Antennae much longer than proboscis -Female <i>Deinocerites</i></p> | | <p>4b Antennae shorter than proboscis -Female <i>Culex</i></p> | |
| <p>5a Many long scales present on hind legs -Female <i>Psorophora</i></p> | | <p>5b Hind legs without long scales -Female <i>Aedes</i></p> | |