

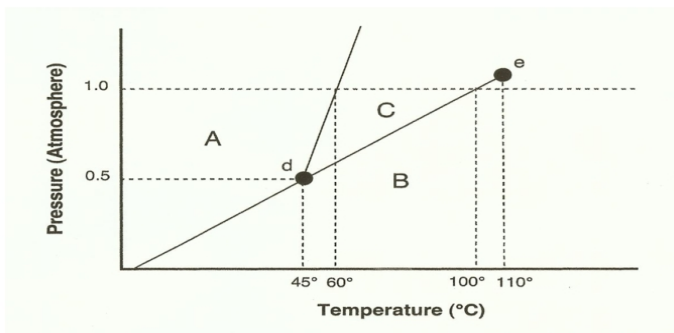
Name _____

Due Date _____

**PHASE DIAGRAM WORKSHEET
(Single Component)**

Part A – Generic Phase Diagram.

Answer the questions below in relation to the following generic phase diagram.



1. Which section represents the solid phase? _____
2. What section represents the liquid phase? _____
3. What section represents the gas phase? _____
4. What letter represents the triple point? _____ In your own words, what is the definition of a triple point?

5. What is this substance's normal melting point, at 1 atmosphere of pressure? _____
6. What is this substance's normal boiling point, at 1 atmosphere of pressure? _____
7. Above what temperature is it impossible to liquefy this substance, no matter what the pressure? _____
8. At what temperature and pressure do all three phases coexist? _____
9. At a constant temperature, what would you do to cause this substance to change from the liquid phase to the solid phase? _____
10. What does sublimation mean? _____

Part B – Phase Diagram for Water.