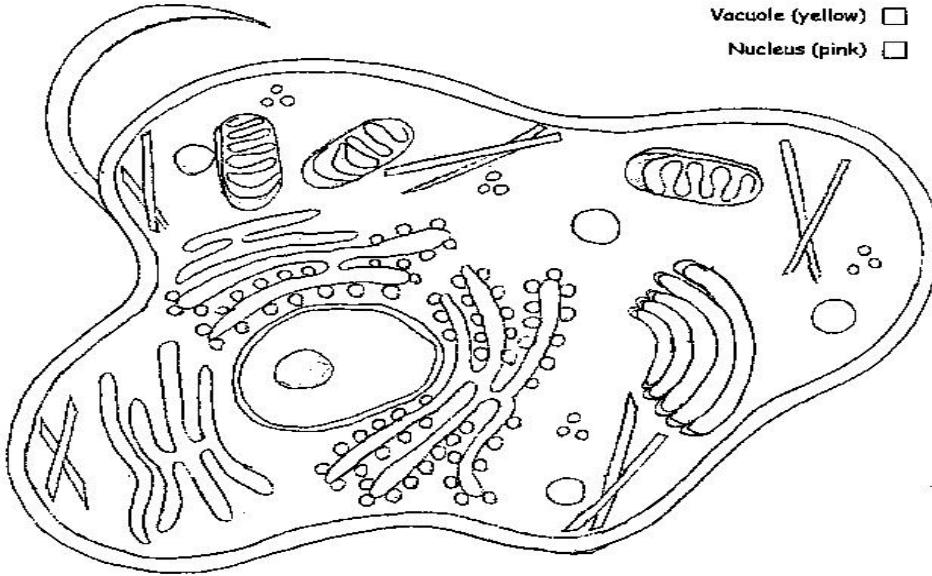


Name _____

Animal Cell Coloring

- Cell Membrane (brown)
- Cytoplasm (blue)
- Nuclear Membrane (purple)

- Ribosome (red)
- Endoplasmic Reticulum (green)
- Mitochondria (orange)
- Vacuole (yellow)
- Nucleus (pink)



Briefly describe the function of the cell parts.

1. Cell Membrane _____
2. Endoplasmic Reticulum _____
3. Ribosome _____
4. Mitochondria _____
5. Nucleus _____