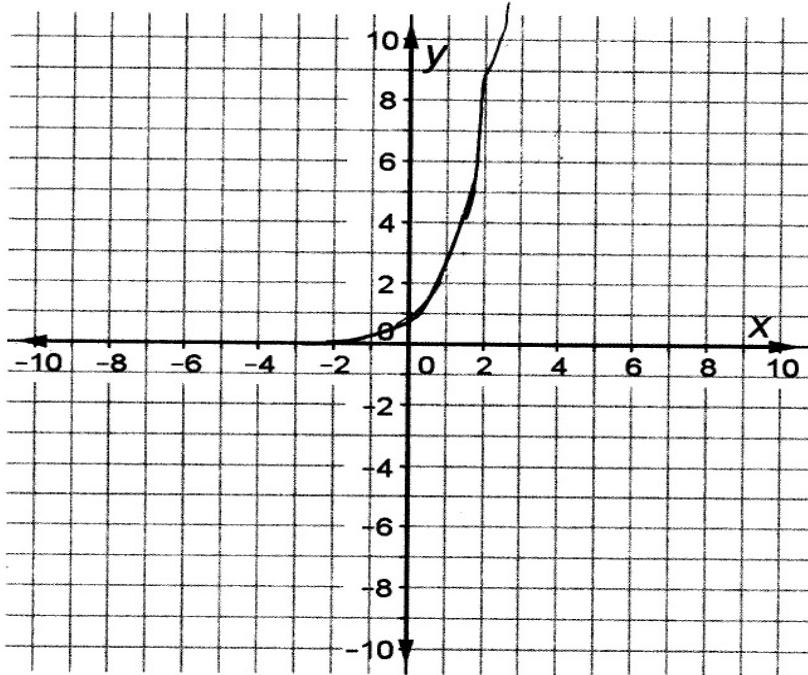


Graph the function  $g(x) = 3^x$  and answer the questions below.



x	y
1	3
2	9
3	27
4	81

1. Is this function an example of exponential growth or exponential decay?

exponential growth

2. Are there any intercepts? If so, describe them.

only through the y-axis and it crosses at  $(0, 1)$ , it never passes through the x-axis

3. What happens to the value of  $g(x)$  as  $x$  gets larger and larger?

it also gets larger,