

**gills underneath cap**

(some fungi have pores or downward-projecting, spine-like teeth beneath the cap)

**cap (or pileus)**

**basidia**

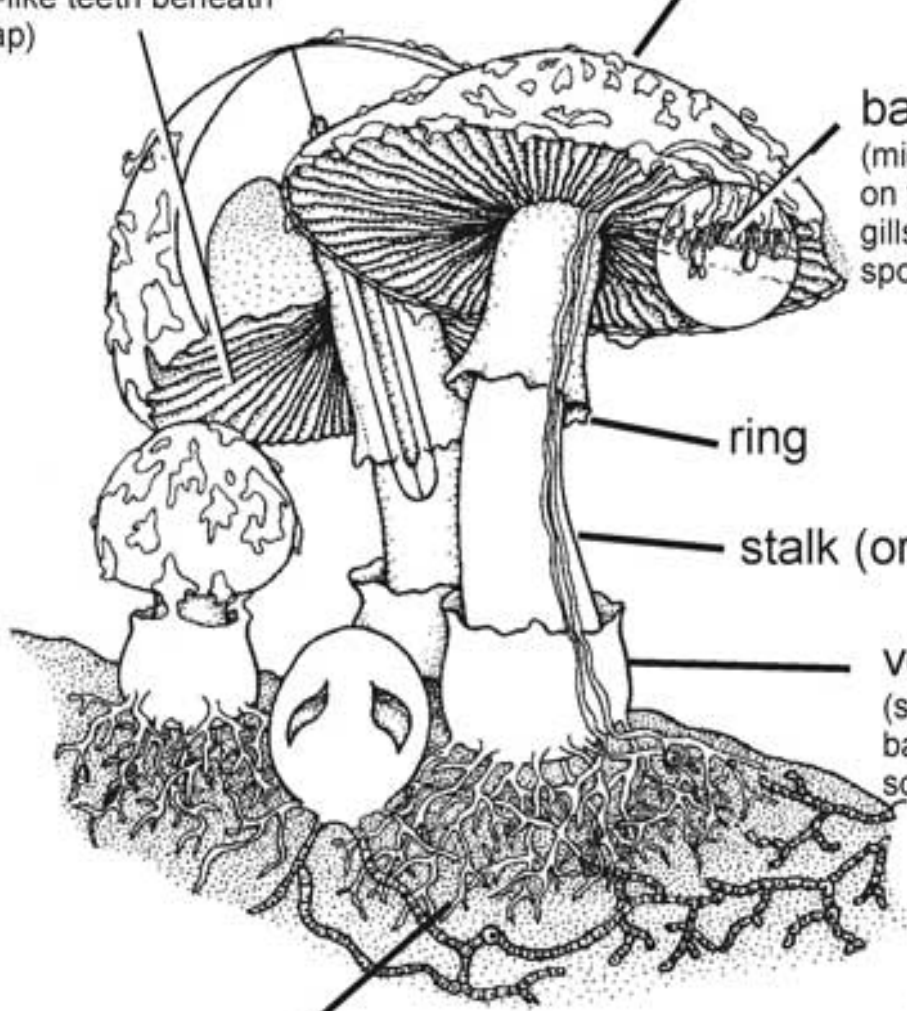
(microscopic cells on the sides of the gills, on which the spores form)

**ring**

**stalk (or stipe)**

**volva**

(sack-like layer at the base of the stalk of some fungi)



Livingstone ©BIODIDAC

**microscopic mycelium within the substrate on which the fungus is growing**