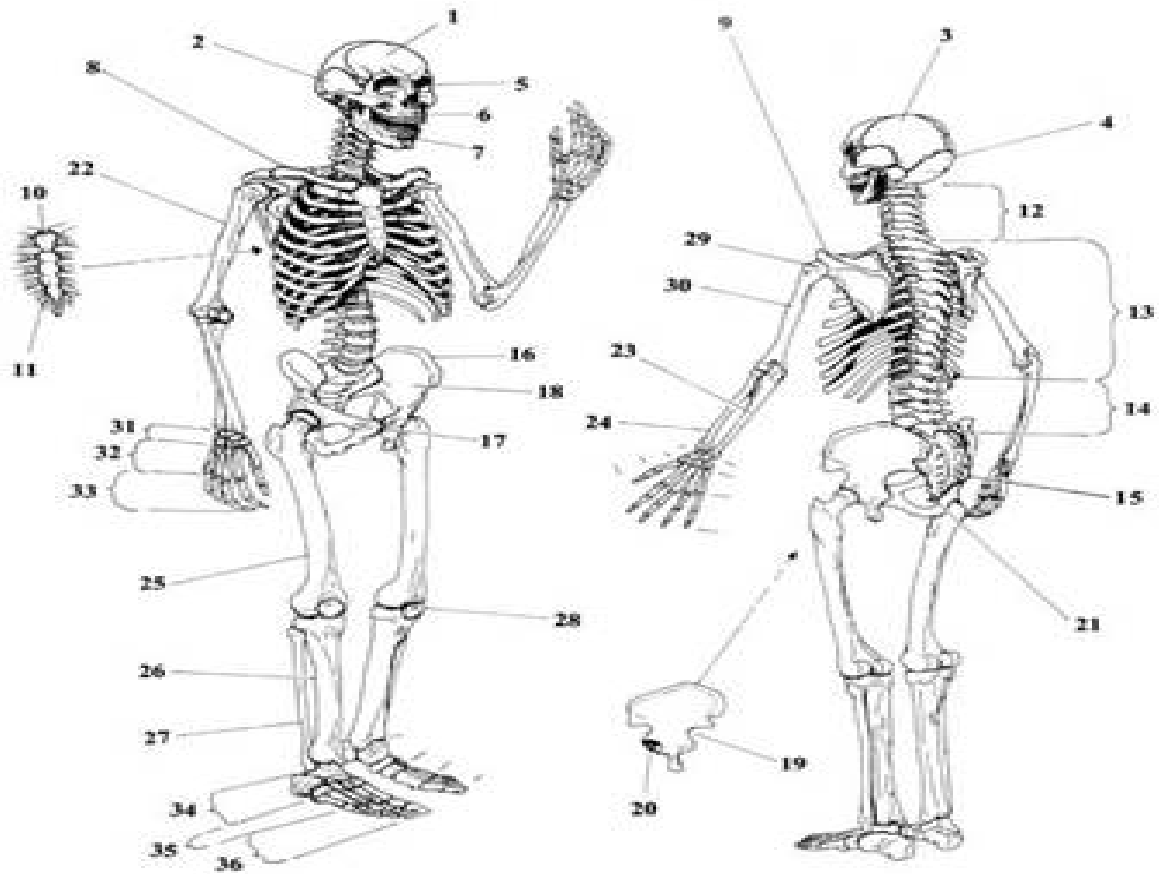


# The bones of the human skeleton

shown in a male (left), and a female (right)



- |                |                 |                                    |                   |                            |
|----------------|-----------------|------------------------------------|-------------------|----------------------------|
| <b>Cranium</b> | <b>Shoulder</b> | <b>Vertebral Column and Pelvis</b> | <b>Long bones</b> | <b>Long Bone structure</b> |
| 1) Frontal     | 8) Clavicle     | 12) Cervical vertebrae (C1-C7)     | 22) Humerus       | 29) Fused epiphysis        |
| 2) Temporal    | 9) Scapula      | 13) Thoracic vertebrae (T1-T12)    | 23) Ulna          | 30) Shaft                  |
| 3) Parietal    | 10) Manubrium   | 14) Lumbar vertebrae (L1-L5)       | 24) Radius        |                            |
| 4) Occipital   | 11) Sternum     | 15) Sacrum                         | 25) Femur         | <b>Extremities</b>         |
| 5) Orbit       |                 | 16) Iliac crest                    | 26) Tibia         | 31) Carpals                |
| 6) Maxilla     |                 | 17) Pubic symphysis                | 27) Fibula        | 32) Metacarpals            |
| 7) Mandible    |                 | 18) Pelvis                         | 28) Patella       | 33) Phalanges              |
|                |                 | 19) Sciatic notch                  |                   | 34) Tarsals                |
|                |                 | 20) Acetabulum                     |                   | 35) Metatarsals            |
|                |                 | 21) Coccyx                         |                   | 36) Phalanges              |