

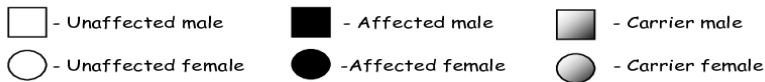
Name \_\_\_\_\_  
Date \_\_\_\_\_

## Pedigree Charts Worksheet(s)

### Background Information:

Pedigree charts are very important to many different fields of science. One reason they are important is because, they help scientists understand the genetic patterns of diseases. It is important to be able to interpret pedigree charts in order to learn the pattern of a disease or condition. Specifically, using a pedigree chart, you can tell if the disease or condition is autosomal, X-linked, dominant, or recessive.

Before you start this activity it is important to review several symbols:



### Procedure:

A. First you need to become comfortable in making a pedigree chart. Complete the following examples. You may refer to your notes if necessary.

1. How can you tell if a couple is married on a pedigree?

Write a one sentence description and draw an example.

---

---

2. How can you tell if the couple who is married had children? Write a one sentence description and draw an example.

---

---

3. Draw a pedigree that represents Mary married to Greg and with 2 sons (Scott and Tyler) and 1 daughter (Karen). Please label the pedigree with the names of the people.