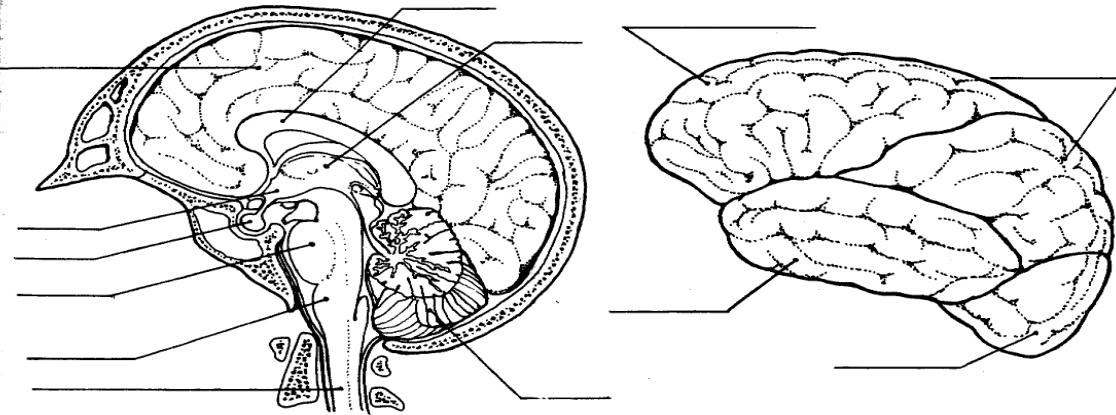


STRUCTURE OF THE BRAIN

Name _____

Label the correct parts of the brain and spinal cord on the diagram at the left below. Give the purpose/function of each part.

- a. cerebellum _____
- b. medulla oblongata _____
- c. thalamus _____
- d. hypothalamus _____
- e. corpus callosum _____
- f. pons _____
- g. spinal cord _____
- h. cerebrum _____
- i. pituitary gland _____



Lobes of the Cerebrum

The diagram to the right above shows the four major lobes of each hemisphere of the cerebrum: frontal, parietal, occipital and temporal. Label each lobe. Then, fill in the blanks below with the correct answers.

The _____ lobes control some body movements, reasoning, judgment and emotions. The sense of vision is located in the _____ lobe. The sense of hearing is interpreted in the _____ lobes. The _____ lobes interpret sensations such as pain, pressure, touch, hot and cold.