

## Lesson 8 – Going to the Mall

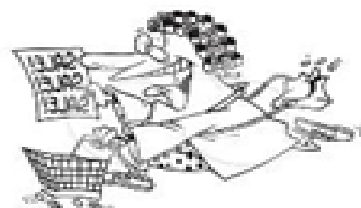
### Interview

1. Where would you go first when you arrive at this mall?
2. What would you buy for your friend's birthday?
3. Where would you go when you get hungry?

Name	Answer for question 1	Answer for question 2	Answer for question 3

### Expressions

- across from
- around the corner from
- next to
- between A and B
- at the end of the hall
- on the right / left



1. The Flower Shop is \_\_\_\_\_ the Pet Shop \_\_\_\_\_ the Ice-cream Shop
2. The Fast Food Restaurant is \_\_\_\_\_ the Arcade.
3. The Men's Restroom is \_\_\_\_\_ the Movie Theatre.
4. The Stationery Shop is \_\_\_\_\_ from the Jewelry Store.
5. The Music Stop is \_\_\_\_\_ the Shoe Store.
6. The Ladies Restroom is \_\_\_\_\_ the Toy Store and the \_\_\_\_\_.
7. The Bakery is across from the \_\_\_\_\_.

### Dialogue

A: Excuse me. Do you know where I can buy flowers?

B: Yes. You can buy them at the Flower Shop.

A: Could you tell me where the Flower Shop is?

B: Sure. It's between the Pet Shop and the Ice-cream Shop.

A: I see. Thank you.

B: It's a pleasure.

#### Try these:

- ...buy shoes?
- ...buy toys?
- ...watch a movie?
- ...buy something to drink?
- ...buy a soccer ball?
- ...eat ice-cream...