

KINGDOM PROTISTA

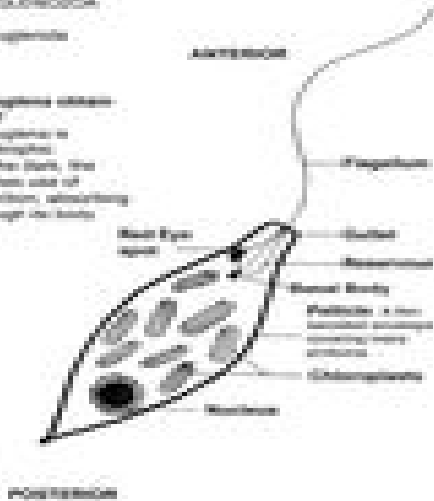
AMOEBA PROTEUS

PHYLUM EUKARYOTA

Subphylum: Euglenozoa

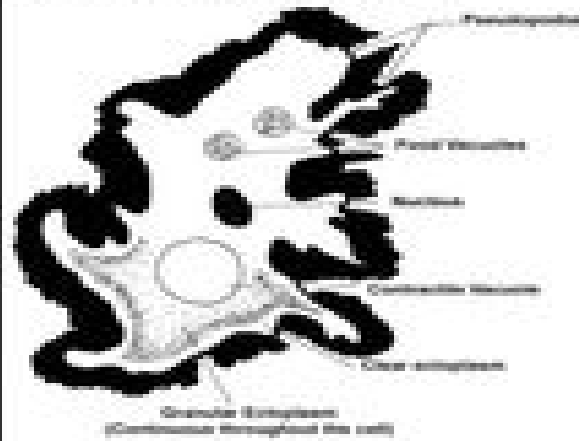
Euglenozoa

How does *Euglena* obtain its nutrients?
Members of *Euglena* are primarily autotrophic, but if kept in the dark, the organism makes use of nitrogen fixation, absorbing nutrients through its body surface.



Anterior to

Since accurate phylogenetic relations are currently poorly understood, the amoebae are not assigned to a specific taxon.



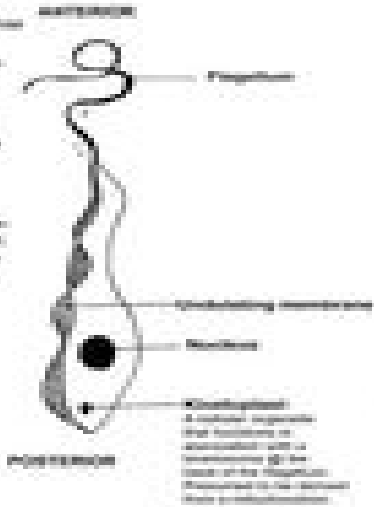
PHYLUM EUKARYOTA

Subphylum: Kinetoplastida

Trypanosoma brucei

There are several primary hosts for *T. brucei* (tsetse fly, animal reservoir). Several species cause African sleeping sickness in humans. The vector is the tsetse fly.

7 other species of *Trypanosoma* are known living in Central & South American forest dwelling traps.



PHYLUM EUKARYOTA

Subphylum: Kinetoplastida

Paramecium caudatum

