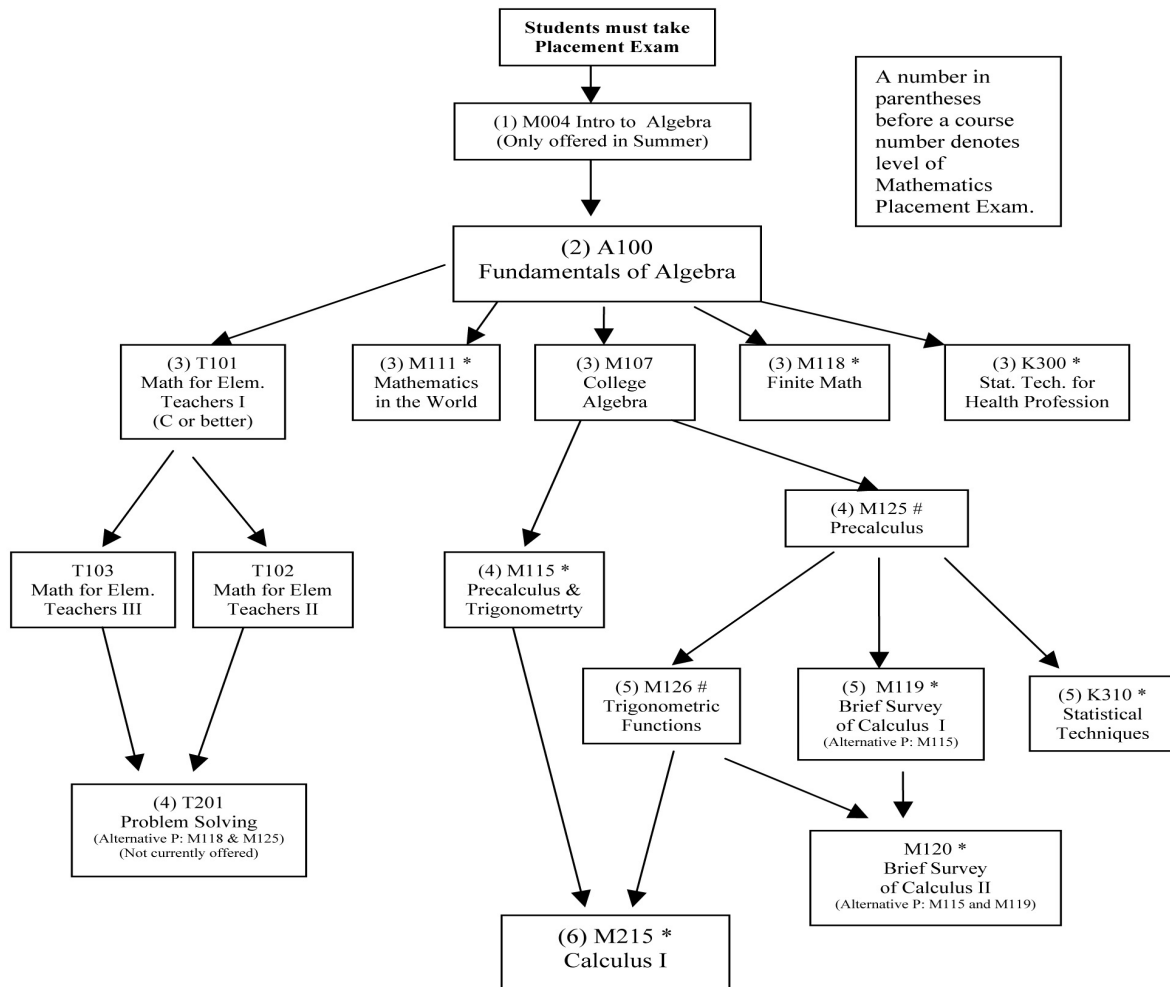


## Lower Level Mathematics Courses and Prerequisites



\* Note: Courses that meet General Education Quantitative Reasoning Requirement are K300, K310, M111, M115, M118, M119, M120, (M125 and M126), M215, M216.

# Note: M115 (5 credits) = M125 (3 credits) + M126 (2 credits)  
M125 and M126 together meet Quantitative Reasoning Requirement