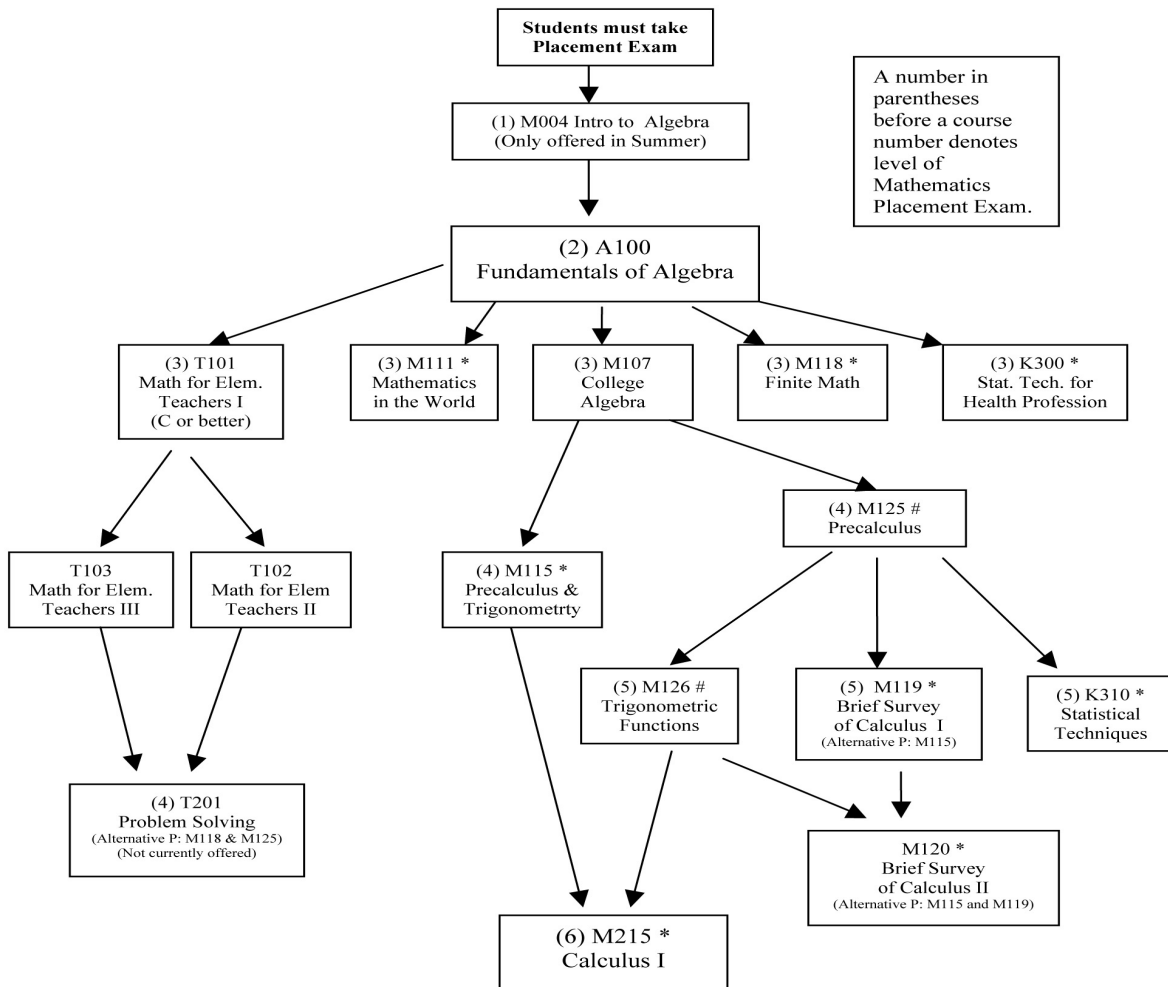


Lower Level Mathematics Courses and Prerequisites



* Note: Courses that meet General Education Quantitative Reasoning Requirement are K300, K310, M111, M115, M118, M119, M120, (M125 and M126), M215, M216.

Note: M115 (5 credits) = M125 (3 credits) + M126 (2 credits)
M125 and M126 together meet Quantitative Reasoning Requirement