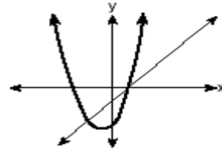


Name: _____

- 1 The accompanying diagram shows the graphs of a linear equation and a quadratic equation.
060507a



How many solutions are there to this system of equations?

- (1) 1 (3) 3
(2) 2 (4) 0
- 2 The graphs of the equations $y = x^2 + 4x - 1$ and $y + 3 = x$ are drawn on the same set of axes. At which point do the graphs intersect?
060018a

- (1) (1,4) (3) (-2,1)
(2) (1,-2) (4) (-2,-5)

- 3 Solve the following system of equations algebraically.
080135a

$$y = x^2 + 4x - 2$$
$$y = 2x + 1$$

- 4 Solve the following system of equations:
080538a

$$y = x^2 + 4x + 1$$
$$y = 5x + 3$$

[The use of the grid is optional.]

