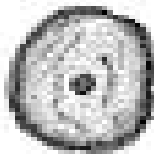


## Animal Cell Organelles Quiz

1. Each cell has a protective, semi-permeable, outer layer called the \_\_\_\_\_.

2. Inside the cell, the watery medium in which all the organelles float, is called \_\_\_\_\_.

3. Little grains floating around inside the cell involved in proteins production are called \_\_\_\_\_.



4. The cell \_\_\_\_\_, contains our **DNA** with all our genetic information found on 23 paired structures called \_\_\_\_\_.

5. It is surrounded by a protective \_\_\_\_\_.



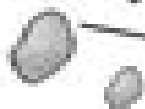
6. \_\_\_\_\_ is a series of folded membrane pathways spotted with ribosomes. Together they make new proteins and membranes.



7. \_\_\_\_\_ has no ribosomes on it and forms containers called **transport vesicles** that are used to move things around inside the cell.



8. \_\_\_\_\_ are package things to be transported out and around the cell.



9. \_\_\_\_\_ are vesicles with digestive enzymes inside to break down the things the cell no longer needs.

10. \_\_\_\_\_ are membrane large membranous sacs for storing things. **Vesicles** are smaller sacs.



11. \_\_\_\_\_ have a double membrane with finger-like \_\_\_\_\_ and break down sugars to make energy for the cell.

©Shari Anzel

[www.exploringnature.org](http://www.exploringnature.org)